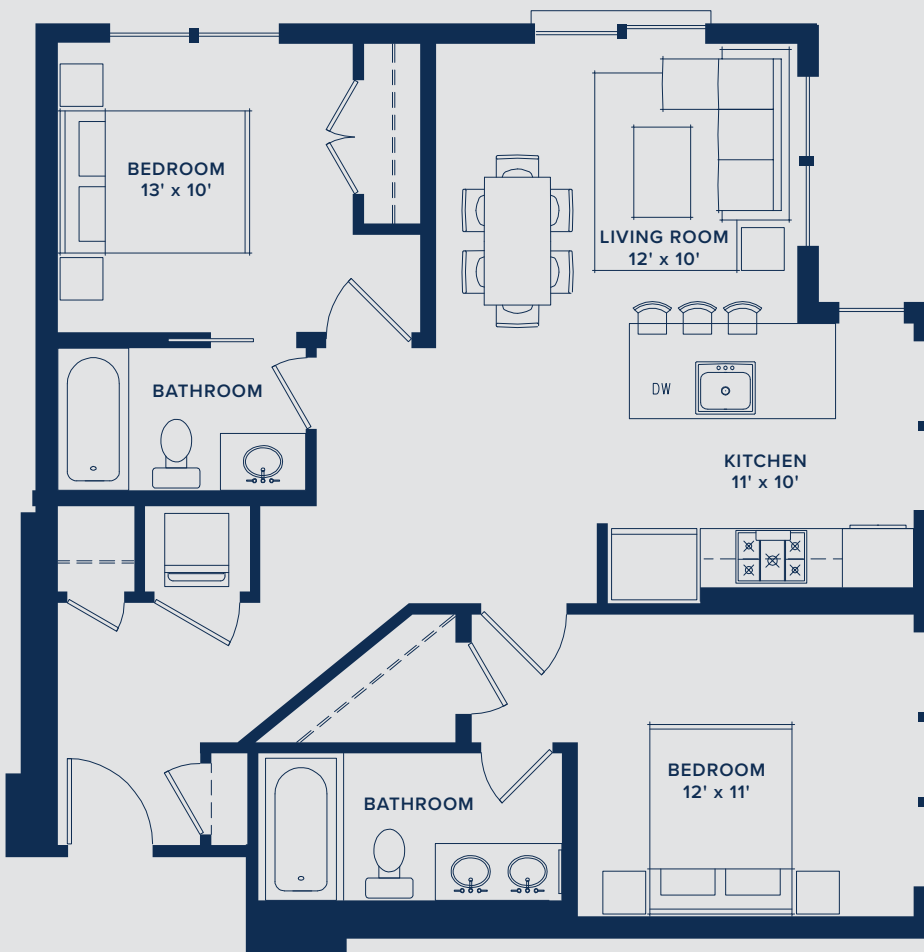


# 403

## Residence

2 BEDROOMS  
2 BATHROOMS  
938 SF  
4TH FLOOR



## features & finishes

### KITCHENS

- Modern chef's kitchens with cabinetry made in the USA
- Quartz countertops in cararra marble with waterfall feature
- Moen high arc pull-down spring faucet
- 24" under-mounted sinks
- Marble chevron patterned backsplash
- Bosch appliances
- Dimmable under-cabinet lighting
- Dimmable pendant lighting

### BATHROOMS

- Glass barnstyle doors on bathtubs and showers
- Deep Mirabelle soaking tub
- Halo-lit hotel style mirrors
- Kohler dual flush toilets
- Kohler Verticyl sinks
- Moen widespread faucet
- Moen shower and bathtub trim
- Quartz countertops in cararra marble on modern vanities

### UNITS

- Wide plank hardwood flooring throughout living areas
- Dimmable recessed lighting throughout
- Floor-to-ceiling windows in select areas
- Oversized eight-foot doors
- Personal doorman latch system for building and unit entry



7H is not yet registered as a condominium with the D.C. Department of Housing and Community Development. Units will not be offered for sale prior to registration.